

Quick Start Guide for ArcGIS Online

ArcGIS is a geospatial tool that helps you create maps to visualize data over a geographic area. Typically, subscriptions to the desktop version of ArcGIS are very expensive, and the software requires a significant amount of training to gain competency. However, by leveraging the power of preformatted open data sets and Esri's streamlined and free edition of ArcGIS Online, you can begin creating maps in no time. This guide will walk you through signing up for ArcGIS Online and connecting data from the WPRDC open data portal.

Signing up and accessing ArcGIS Online

Signup for ArcGIS isn't very straightforward. Ignore references to free trials and purchasing and click "sign in" in the upper right corner. Select the "Create an account" tab on the next page and go through the application.



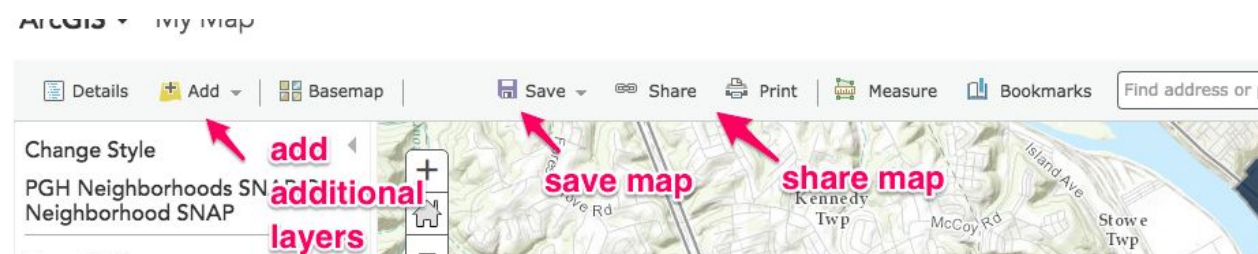
Once signed in, click your account dropdown in the upper right corner and select "ArcGIS Online" to access the application.

Navigating ArcGIS Online

From the main menu, you will be able to access the main application by selecting "Map", access shared content in Groups, and also see all of your previously saved content.

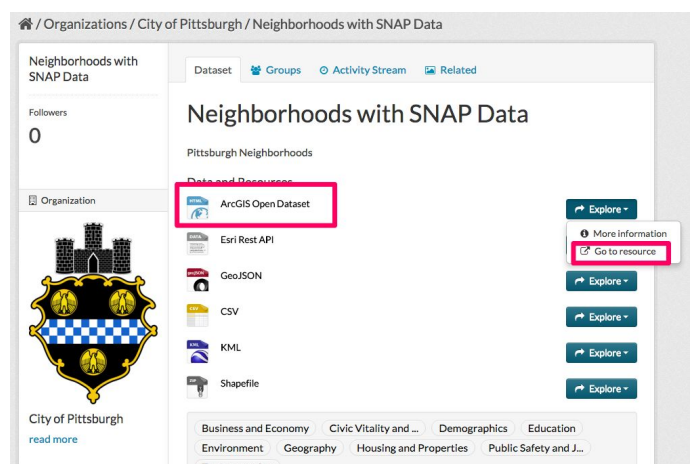


In the application, the main menu allows you to add layers, save your map, and access sharing features. Layer-specific options are located on the sidebar.

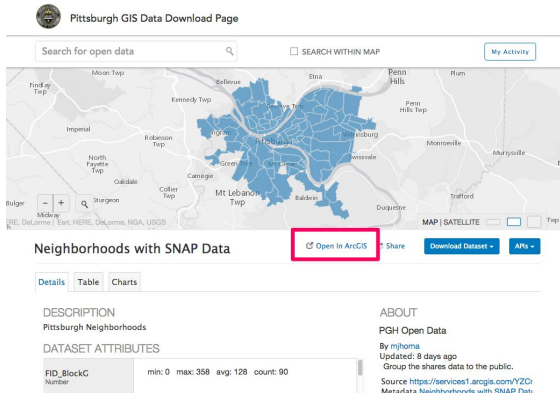


Finding and Connecting Data to ArcGIS Online

You can upload shapefiles and CSVs to ArcGIS Online, but you are limited to 1,000 features in your upload file in the free edition. This probably won't be a problem you run into often, but could be an issue if you are trying to upload a file that has geocoded police incident reports, or similarly large files. The



easiest way to access open data files with geospatial data on WPRDC is to look for datasets with the Esri REST filetype.

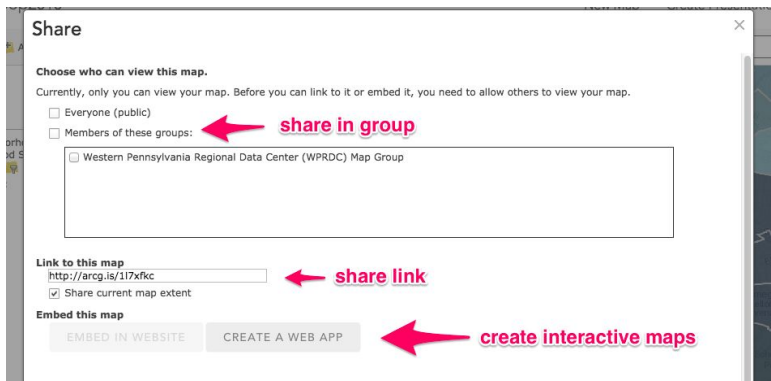


These datasets will have an “ArcGIS Open Dataset” filetype that will link you to the City of Pittsburgh GIS page by clicking “Explore”. From here, you can open up the file directly into ArcGIS Online by clicking “Open in ArcGIS”.

From there, you can begin directly manipulating your data in a new layer.

Sharing Options

When you are done with your map, you can share your results via the “share” button in the upper right. Here, you will be able to add your map to groups, obtain a direct link that you can then use in emails, obtain HTML code to embed your map in websites, or use prebuilt web apps. Some of the prebuilt web apps, like story maps, allow you to create interactive maps to show changes and trends.



Additional resources

- ArcGIS quick start guide from Esri: <https://learn.arcgis.com/en/projects/get-started-with-arcgis-online/>
- ArcGIS online training courses: <http://www.esri.com/training/main/arcgis-online-training>